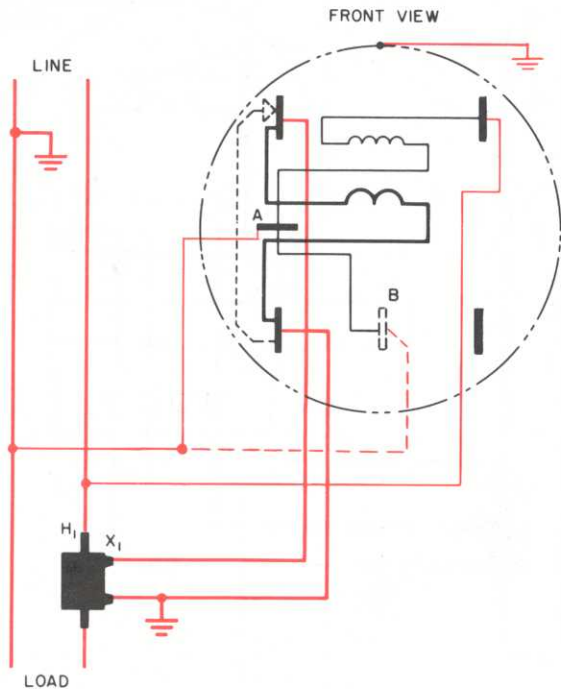


Single-phase, 2-wire circuits

FORM 3S

Note: Mount removable terminal in position "A" for vertical socket. Change to position "B" for horizontal socket.



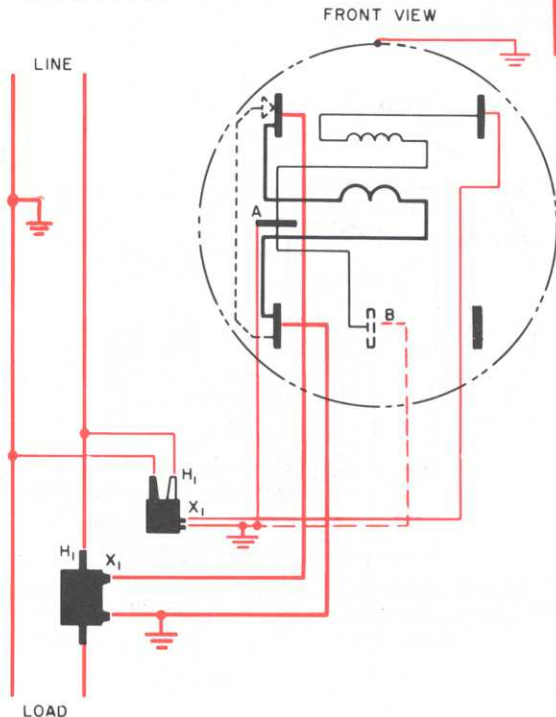
S-base, 2-wire, Class 10 meter with CT; 5-jaw socket with circuit-closing device

4

Single-phase, 2-wire circuits

FORM 3S

Note: Mount removable terminal in position "A" for vertical socket. Change to position "B" for horizontal socket.



S-base, 2-wire, Class 10 meter with CT and PT; 5-jaw socket with circuit-closing device

5