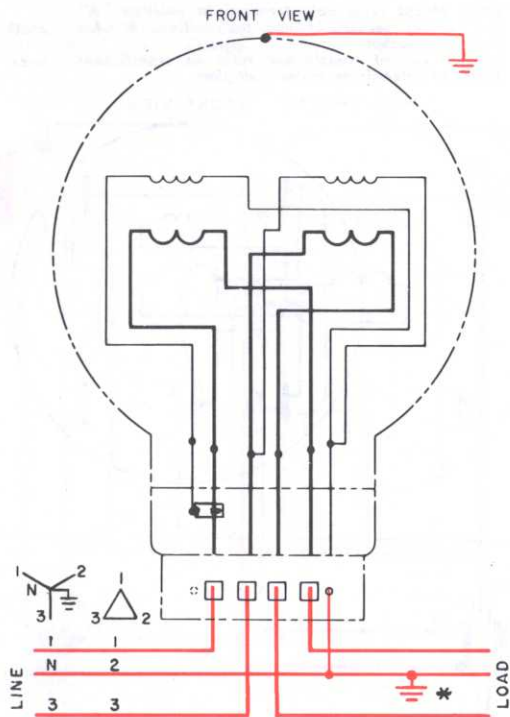


# Network, 3-wire and 3-phase, 3-wire circuits

FORM 12A



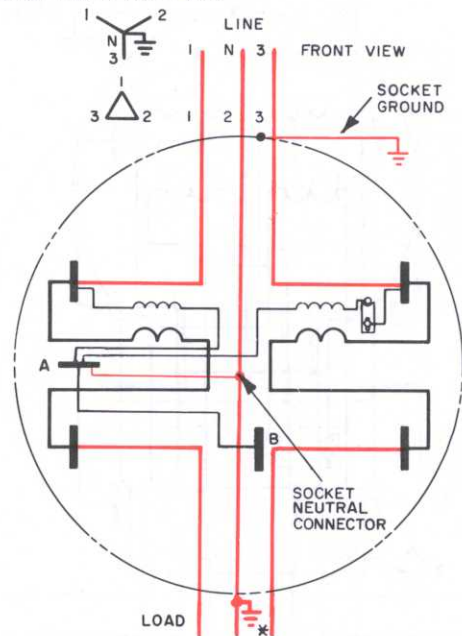
\*Note: A ground is optional on 3-phase circuits.

Type V-62-A, 15- or 30-amp, 120-, 240- or 480-volt self-contained meter

# Network, 3-wire and 3-phase, 3-wire circuits

FORM 12S

Note: Mount fifth terminal in position "A" for vertical socket. Change to position "B" for horizontal socket. To mount meter in 7- or 8-jaw socket, the fifth terminal must be in position "B," properly aligned with its socket jaw.



\* Note: If line 2 is grounded, a socket having the line 2 connector attached directly to the socket case may be used. If line 2 is not grounded, a socket with the line 2 connector insulated from the case must be used to avoid inadvertent grounding of line 2.

Type V-62-S, Class 100 or 200, EV or EVX-2-S Class 200, 120-, 240-, or 480-volt self-contained meter; 5-jaw socket