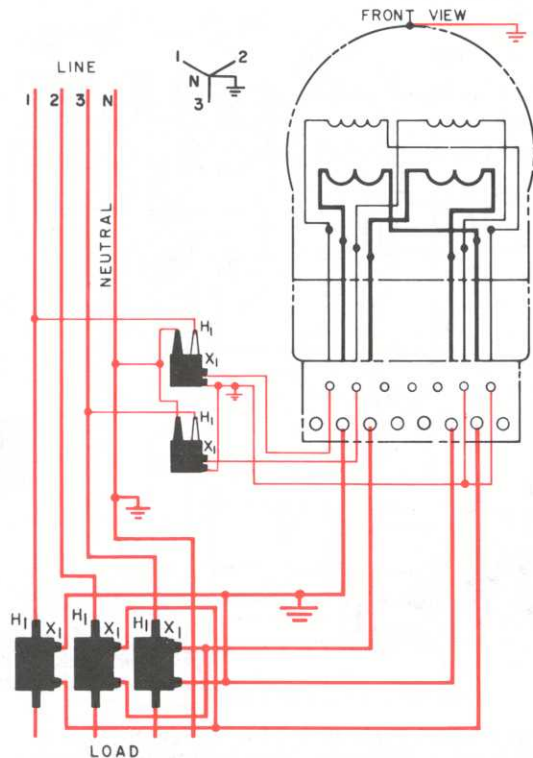


Three-phase, wye, 4-wire circuits

FORM 5A

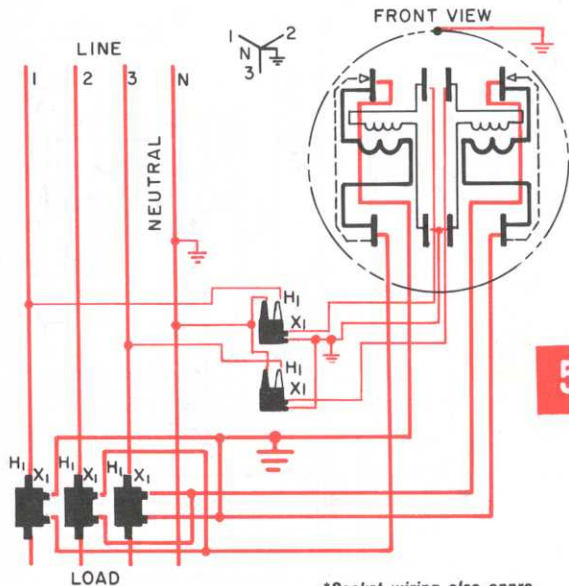


Type V-63-A, 120-volt, Class 10 or 20 or EV-3A Class 20 meter with CT's and VT's. CT's are connected in delta

44

Three-phase, wye, 4-wire circuits

FORM 5S (35S)*



*Socket wiring also appropriate for form 35S. See page 22 for internal meter connection.

Type V-63-S, 120-volt, Class 10 or 20 meter, EV or EVX-3-S Class 20 meter with CT's (connected in delta) and VT's; 8-jaw socket with circuit-closing devices

45

5