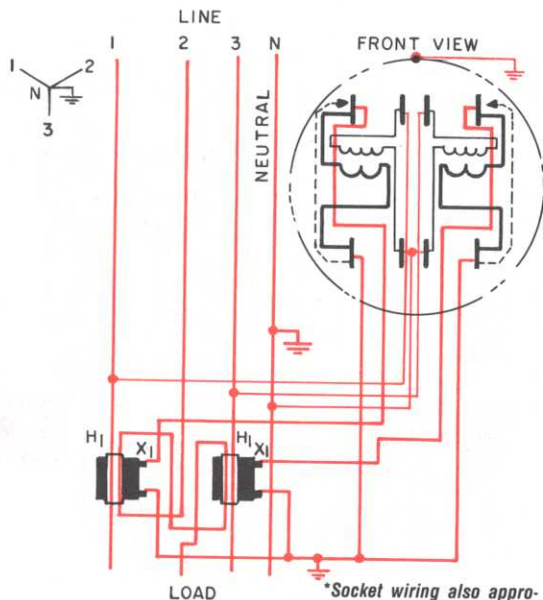


Three-phase, wye, 4-wire circuits

FORM 5S (35S)*

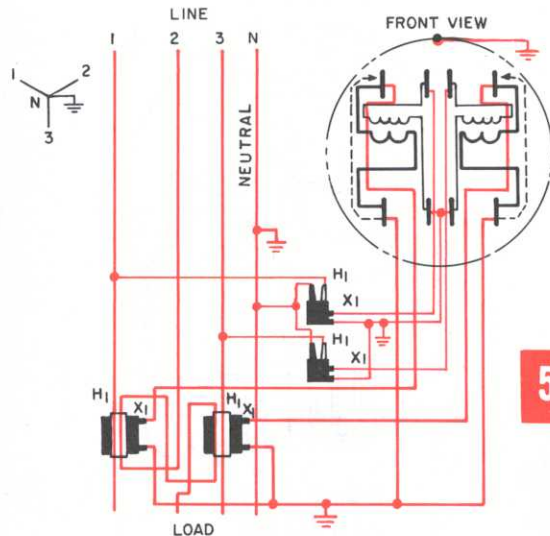


*Socket wiring also appropriate for form 35S. See page 22 for internal meter connection.

Type V-63-S, Class 10 or 20 meter, EV or EVX-3-S, Class 20 meter with window-type CT's, 120 or 240 volts. For use on 120/208Y- or 277/480Y-volt circuits. 8-jaw socket with circuit-closing devices

Three-phase, wye, 4-wire circuits

FORM 5S (35S)*



*Socket wiring also appropriate for form 35S. See page 22 for internal meter connection.

Type V-63-S, 120-volt, Class 10 or 20 meter, EV or EVX-3-S Class 20 meter with VT's and window-type CT's; 8-jaw socket with circuit-closing devices