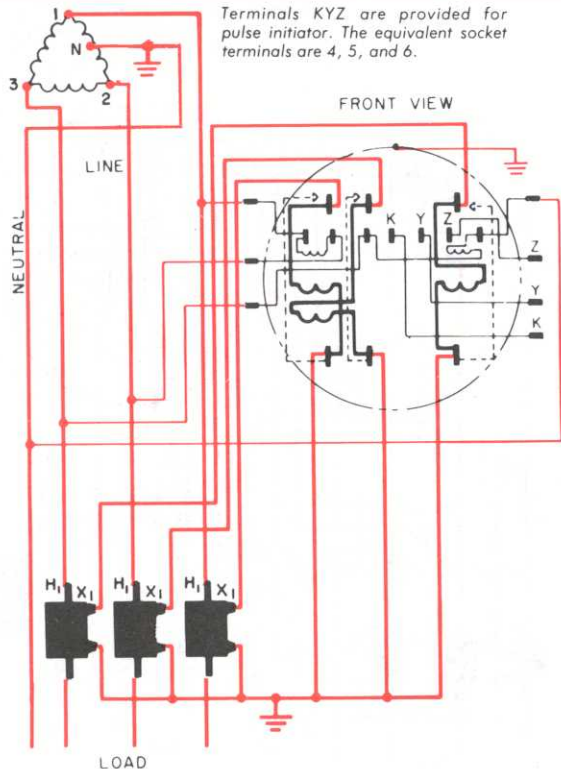


Three-phase, delta, 4-wire circuits

FORM 8S



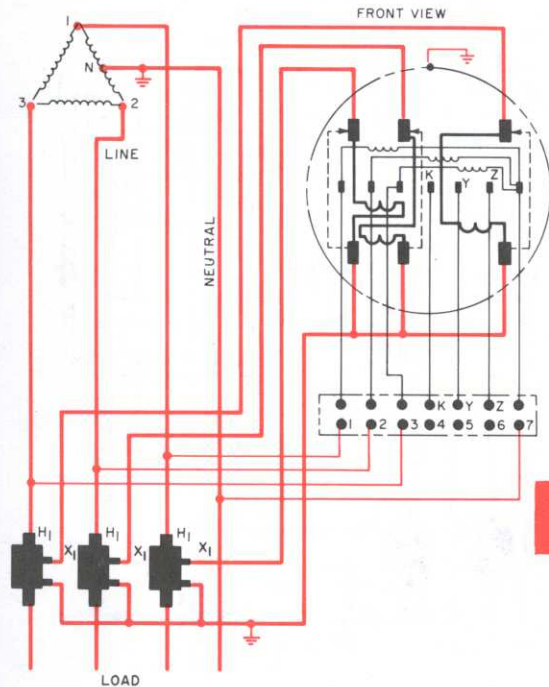
Terminals KYZ are provided for pulse initiator. The equivalent socket terminals are 4, 5, and 6.

Type V-66-S, 240-volt, Class 10 or 20 or EV-6-S Class 20 meter with CT's. Side-connected 13-jaw socket with circuit-closing devices

56

Three-phase, delta, 4-wire circuits

FORM 9S



Terminals KYZ are provided for pulse initiator. The equivalent socket terminals are 4, 5, and 6.

Type EV-7, 120/240-volt, Class 20 meter with CT's. Bottom-connected 13-jaw socket with circuit-closing devices

57