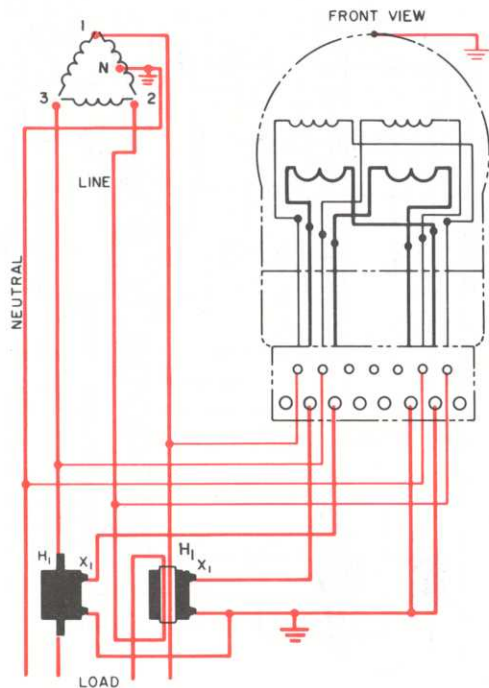


# Three-phase, delta, 4-wire circuits

FORM 5A

**Note:** Window-type CT must have twice the rating and ratio of the 2-wire CT. Multiplier for a secondary meter register is the ratio of the 2-wire CT.



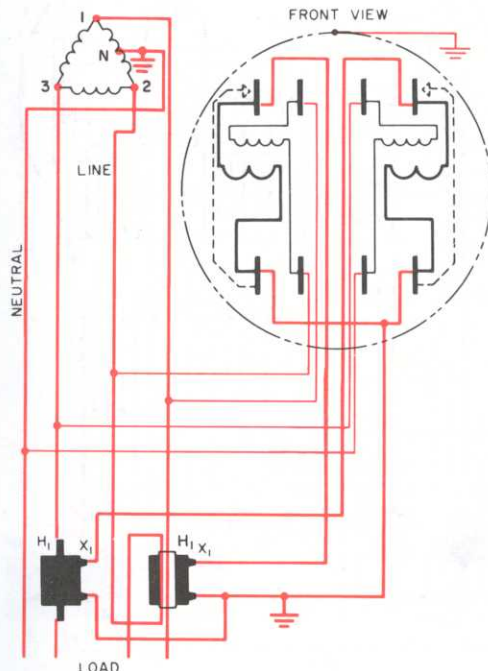
Type V-63-A, 240-volt, Class 10 or 20 or EV-3A Class 20 meter with one 2-wire and one window-type CT

60

# Three-phase, delta, 4-wire circuits

FORM 5S

**Note:** Window-type CT must have twice the rating and ratio of the 2-wire CT. Multiplier for a secondary meter register is the ratio of the 2-wire CT.



Type V-63-S, 240-volt, Class 10 or 20 meter or EV-3-S Class 20 with one 2-wire and one window-type CT; 8-jaw socket with circuit-closing devices

61