

# CURRENT TRANSFORMER

Model 365

Window Diameter 6.41"

APPLICATION:  
Metering.

FREQUENCY:  
50-400 Hz.

INSULATION LEVEL:  
0.6 kV, BIL 10 kV full wave.

REGULATORY AGENCY APPROVALS



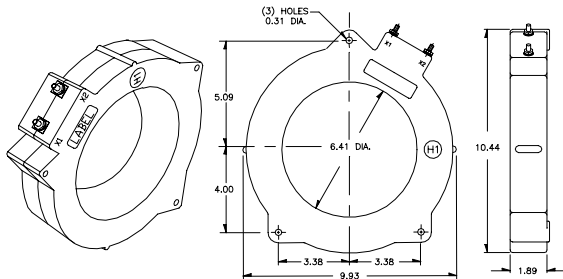
LR89403

Manufactured to meet the requirements of ANSI/IEEE C57.13.  
Classified by U.L. in accordance with IEC 44-1.

Approved for revenue metering by Industry Canada, AE-0665

CONTINUOUS THERMAL  
CURRENT RATING FACTOR:  
1.33 at 30°C. amb., 1.0 at 55°C. amb.

- Secondary terminals are No. 8-32 brass studs with one flatwasher, lockwasher and regular nut.
- Approximate weight 6 lbs.



CATALOG NUMBER	CURRENT RATIO AMPERES	ANSI METERING CLASS AT 60 Hz				
		B0.1	B0.2	B0.5	B0.9	B1.8
365-252	2500:5	0.3	0.3	0.3	0.3	0.3
365-302	3000:5	0.3	0.3	0.3	0.3	0.3
365-322	3200:5	0.3	0.3	0.3	0.3	0.3
365-352	3500:5	0.3	0.3	0.3	0.3	0.3
365-402	4000:5	0.3	0.3	0.3	0.3	0.3
365-502	5000:5	0.3	0.3	0.3	0.3	0.3
365-602	6000:5	0.3	0.3	0.3	0.3	0.3

## TYPICAL EXCITATION CURVE - MODEL 365

