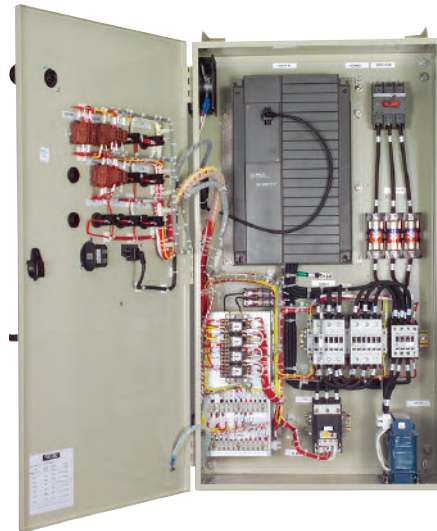
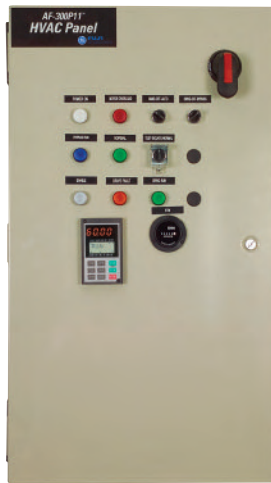


AF-300 P11 HVAC Panels

Big energy savings, smaller package



GE's redesigned AF-300 P11 HVAC Panels are ideal for HVAC fan and pump applications in office buildings, schools, universities, hospitals, retail stores and industrial facilities. Applying drives to variable torque fans and/or pumps, where full speed is not constantly required, can cut energy costs enough in one year to cover the initial purchase. Drives also can reduce ambient noise associated with cooling tower, exhaust and condenser fans. In pump applications, drives can reduce water hammer and cavitation, reducing required maintenance. AF-300 P11 drives interface with major HVAC building automation systems either through simple analog connections or across a communication network.

- Energy savings via affinity laws for centrifugal loads and built-in algorithm for minimizing motor losses under light loads
 - Example: Reducing motor speed to meet a 60% demand flow results in required power of only about 24%
- Typical payback in less than one year*
- Connectivity to building automation systems
- Configurations and options specific to HVAC applications
- Easy drive programming/start-up via the drive's keypad or configuration software

*Estimate based on 75Hp motor with mechanical at 100% speed vs. a drive at 75% speed for 8,760 hours at \$.06/kWh.



imagination at work

AF-300 P11 HVAC Panels

		Enclosed	2 Contactor Bypass	3 Contactor Bypass
Hp Ratings	208VAC, 3PH, 60Hz	3 - 125Hp	3 - 125Hp	3 - 125Hp
	460VAC, 3PH, 60Hz	3 - 300Hp	3 - 300Hp	3 - 300Hp
Environment	Ambient Temperature	-10°C to 40°C	-10°C to 40°C	-10°C to 40°C
	Humidity (RH, non-condensing)	5% to 95%	5% to 95%	5% to 95% RH
	Elevation	0 to 3,300 ft	0 to 3,300 ft	0 to 3,300 ft
Enclosure Type, Style	UL Type 1, Wall-Mount	Std (3-30Hp @ 208V) (3-75Hp @ 460V)	Std (3-30Hp @ 208V) (3-75Hp @ 460V)	Std (3-30Hp @ 208V) (3-75Hp @ 460V)
	NEMA 12 Ventilated, Wall-Mount	Opt (3-30Hp @ 208V) (3-75Hp @ 460V)	Opt (3-30Hp @ 208V) (3-75Hp @ 460V)	Opt (3-30Hp @ 208V) (3-75Hp @ 460V)
	NEMA 12 Ventilated, Floor-Mount	Std (40-125Hp @ 208V) (100-300Hp @ 460V)	Std (40-125Hp @ 208V) (100-300Hp @ 460V)	Std (40-125Hp @ 208V) (100-300Hp @ 460V)
Codes & Standards	UL & cUL	Std	Std	Std
Power Circuit Features	Non-Fused Disconnect w/ Separate Mounted Fuses (panel short circuit current rating = 50kA)	Std	Std	Std
	Mag-Break Circuit Breaker (MCP) (panel short circuit current rating = 65kA)	Opt	Opt	Opt
	DC Link Reactor	Std (>100Hp)	Std (>100Hp)	Std (>100Hp)
	3% AC Line Reactor	Std (<75Hp), Opt (>100Hp)	Std (<75Hp), Opt (>100Hp)	Std (<75Hp), Opt (>100Hp)
	5% AC Line Reactor	Opt	Opt	Opt
	Drive Output Contactor	-	Std	Std
	Bypass Contactor	-	Std	Std
	Class 20 Overload Relay	-	Std	Std
Control Circuit Features	Isolation Contactor	-	-	Std
	Power On Light	Std	Std	Std
	Enable Light	Std	Std	Std
	Bypass Light	-	Std	Std
	Motor Overload Light	-	Std	Std
	Normal Light	-	-	Std
	Drive Run & Fault Lights	-	Opt	Opt
	Local-Remote Switch	Std	-	-
	Hand-Off-Auto Switch	-	Std	Std
	Drive-Off-Bypass Switch	-	Std	Std
	Test-Isolate-Normal Switch	-	-	Std
	Speed Potentiometer	Opt	Opt	Opt
	Control Power Transformer	Std	Std	Std
	Automatic Bypass	-	Opt	Opt
	Smoke Purge Relay	Opt	Opt	Opt
	Elapsed Time Meter	Opt	Opt	Opt
	Customer I/O Terminal Board	Std	Std	Std
	Quantity 2 Enable Inputs	Std	Std	Std
	Remote Bypass Input	-	Std	Std
	Loss of 4-20mA Speed Ref to Preset Speed	Opt	Opt	Opt
Bypass Output (N.O.)	-	Std	Std	
Drive Communication Options	Drive Run Output (N.O.)	Std	Std	Std
	Drive Fault Output (1N.O.-1N.C.)	Std	Std	Std
	4-20mA Output & Relay Output (1N.O.-1N.C.)	Opt	Opt	Opt
	Modbus RTU	Std	Std	Std
	LONWORKS®	Opt	Opt	Opt
	APOGEE® FLN	Opt	Opt	Opt
	Metasys® N2	Opt	Opt	Opt
	Ethernet TCP/IP	Opt	Opt	Opt

LONWORKS is a registered trademark of Echelon Corporation. APOGEE is a registered trademark of Siemens Building Technologies, Inc.. Metasys is a registered trademark of Johnson Controls, Inc.

GE Consumer & Industrial
 41 Woodford Avenue, Plainville, CT 06062
 www.geelectrical.com
 © 2007 General Electric Company

